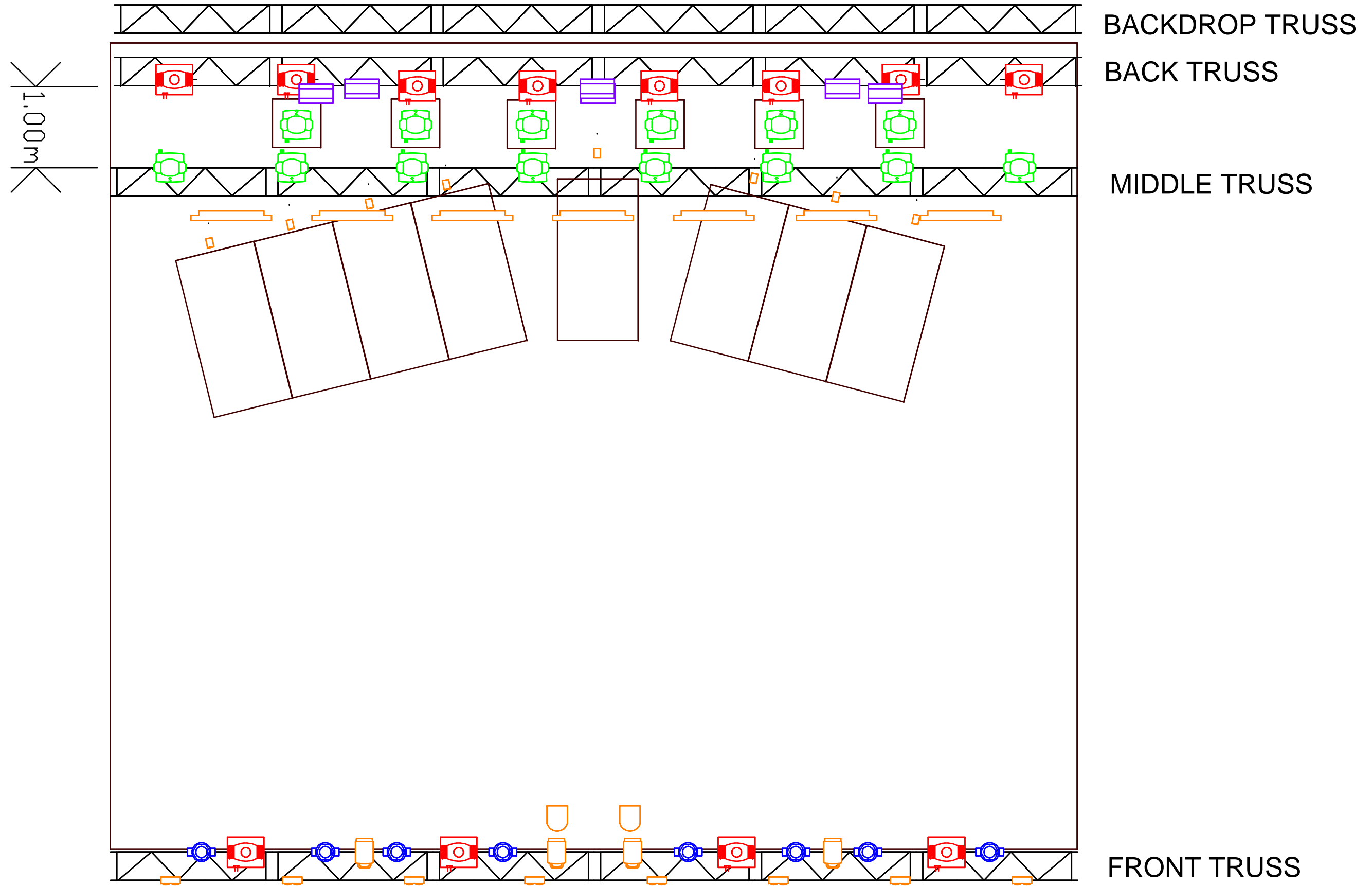
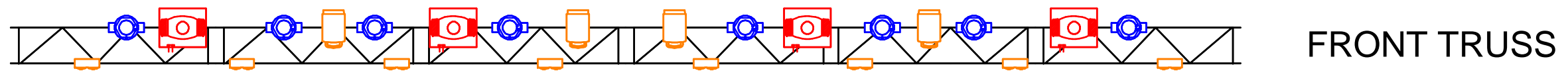
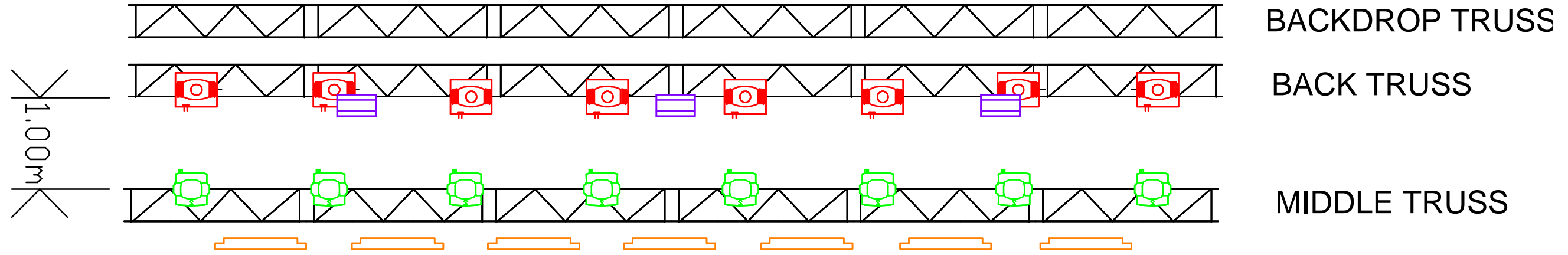


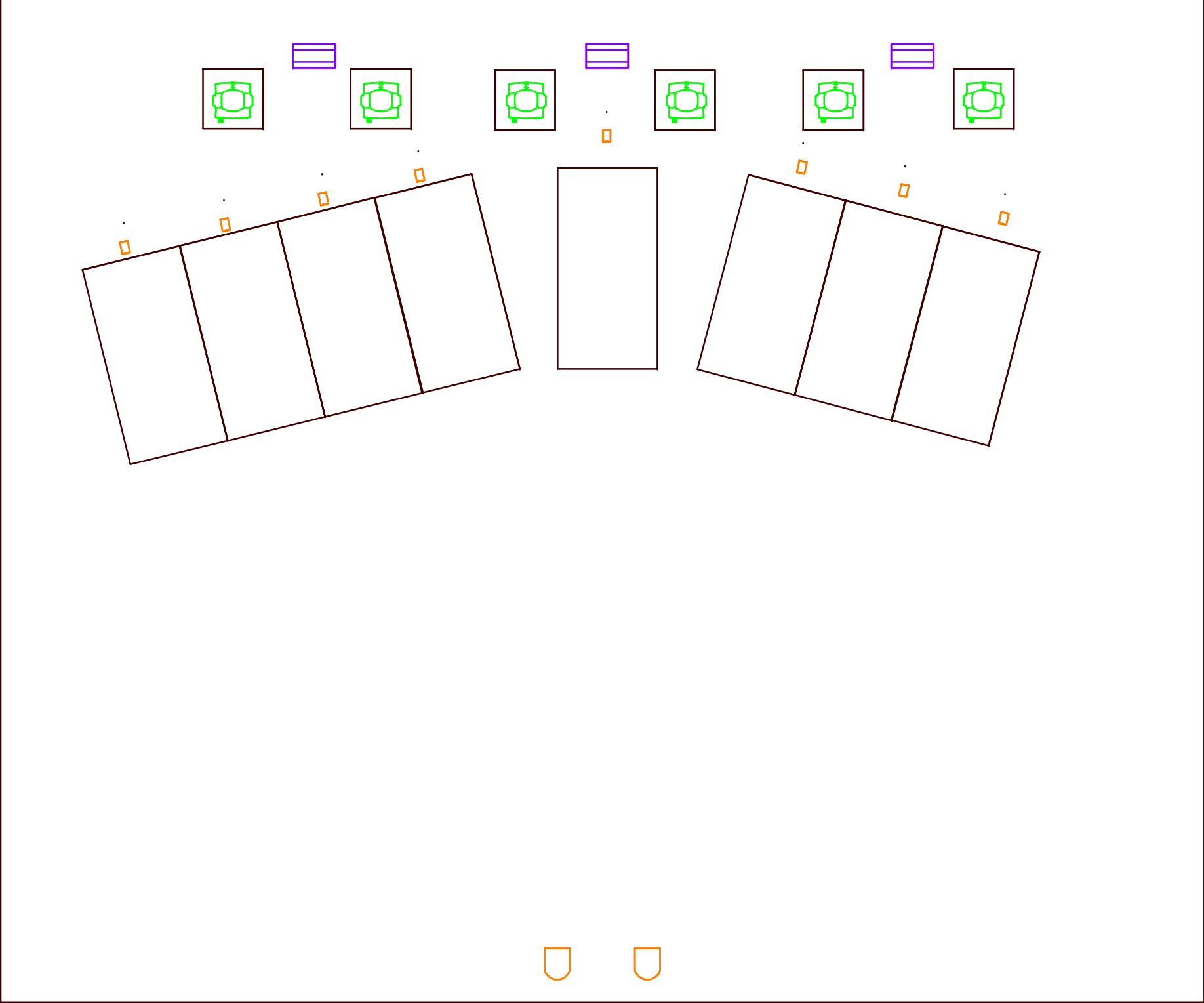
# TOP VIEW



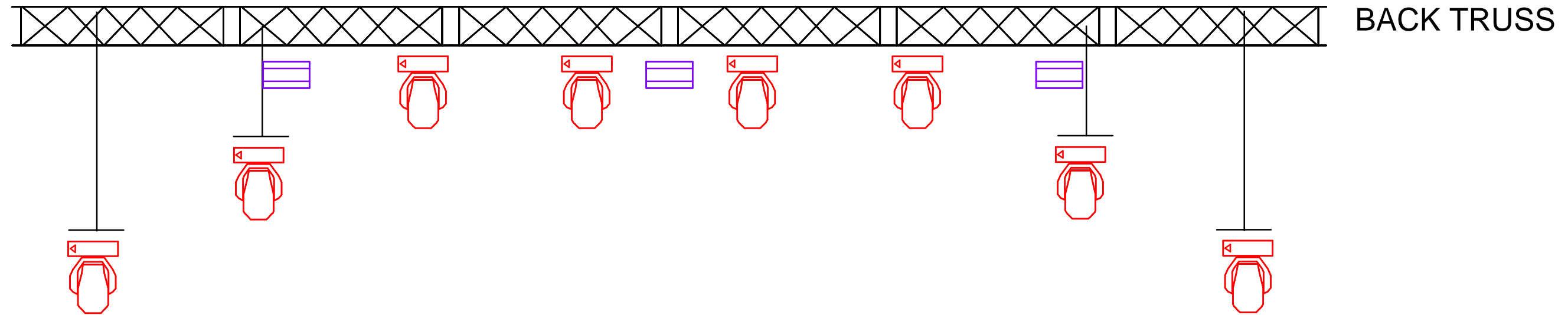
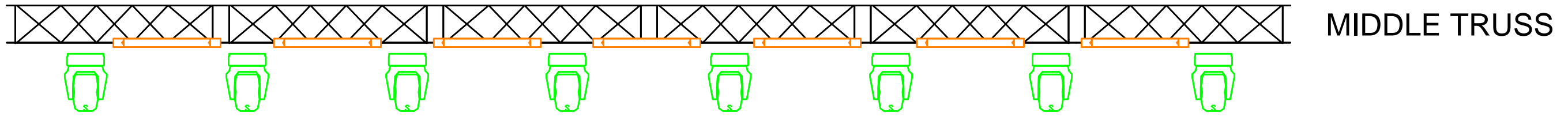
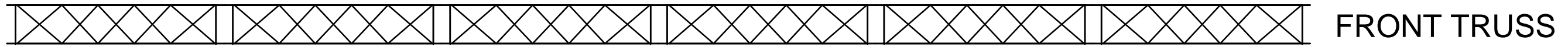
# TOP VIEW - TRUSSES ONLY



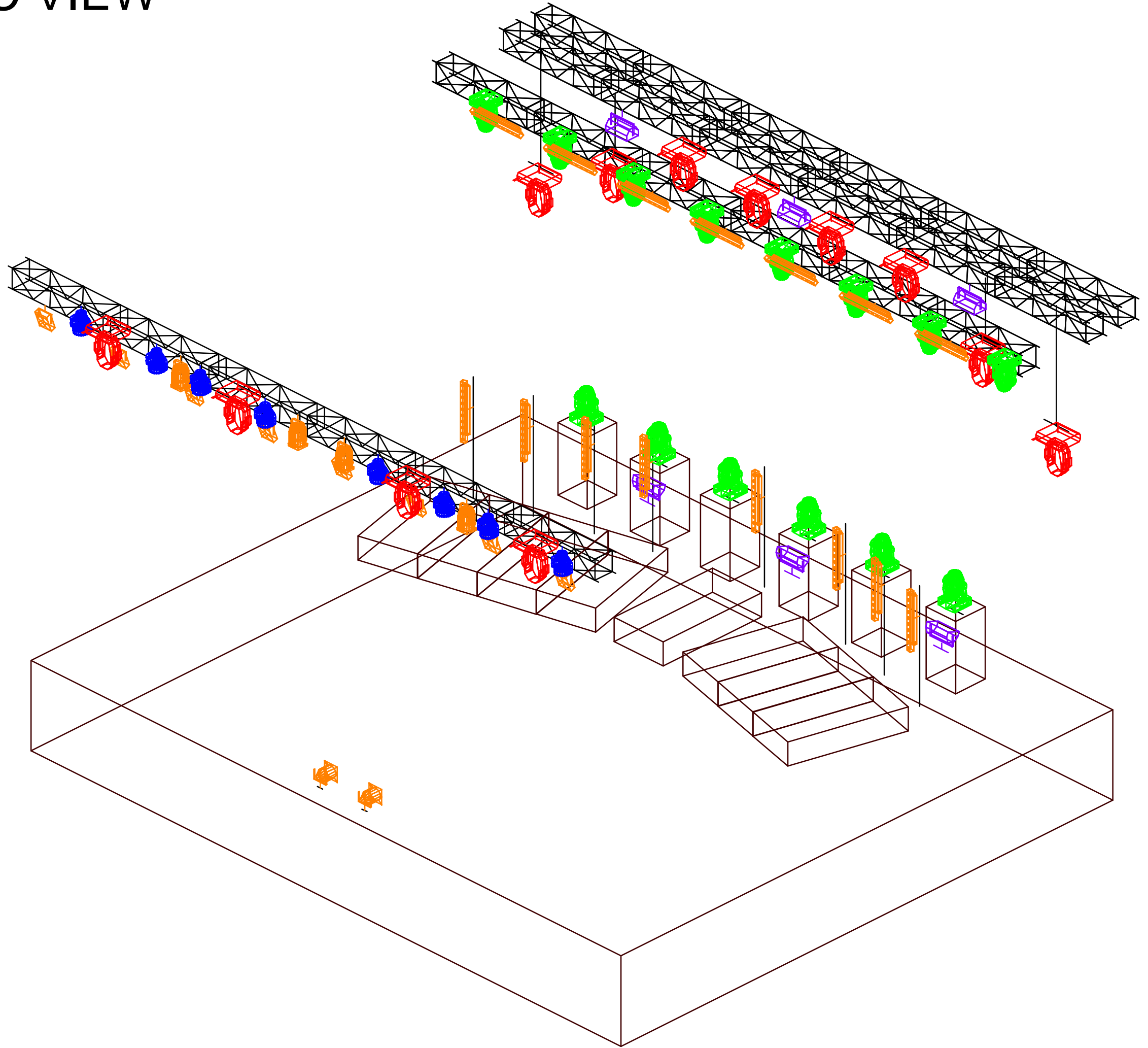
# TOP VIEW - STAGE



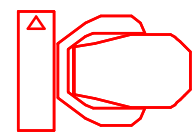
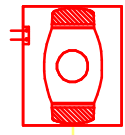
# FRONT VIEW - TRUSSES ONLY



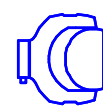
# ISOMETRIC VIEW



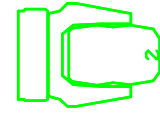
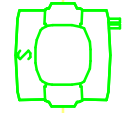
# LEGEND



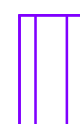
12 x VARI LITE VL 770 / MARTIN MAC 700



8 x DTS NICK NRG / MARTIN MAC 301



14 x CLAY PAKY ALPHA BEAM / DTS NICK NRG / MAC 30



6 x MARTIN ATOMIC 3000



4 x 1kW FRESNEL



8 x 4 LITE BLINDER DWE



2 x PAR 56 FLOOR



15 x SHOWTEC SUNSTRIP ACTIVE